
COOPER CITY HIGH SCHOOL



"SOUND OF PRIDE"

2009-2010
HANDBOOK

Cooper City High School
9401 Stirling Road
Cooper City, Florida 33328
Office: 754-323-0227
Fax: 754-323-0330

www.coopercityhighband.com

WELCOME:

As a new or returning member or parent of the Cooper City Sound of Pride, you are an integral part of a musical ensemble which ranks among the finest in the nation. You join a long list of students and parents that have, throughout the years, established a proud and envied tradition. It's through our daily pursuit of excellence in our performance that we gain immeasurable values, ideals, and life lessons that will stay with us forever. The accomplishments of the present band are built upon the foundations laid by thousands of past members and likewise the future success and reputation of the band depends on YOUR hard work and dedication! This program will give to you in return tenfold as long as you are willing to give into the program. Be proud of the organization that you're choosing to be a part of and always strive to be the best that you can!

The vision of the Cooper City High School Sound of Pride Band and Color Guard Program:

Our vision within the Cooper City High School Sound of Pride Band and Color Guard program is to develop its members to become the most they can be as they continue on into the rest of their lives; to provide these students with the tools they need to make the best decisions for themselves and others when the time comes; to guide and encourage free, creative, and critical thinking that will allow them to have the courage and fortitude to become whatever they want, when they so choose to.

Available performance Ensembles

Wind Ensemble	Drum Line/Percussion	Festival of Winds
Symphonic Band	Winter Guard	UM Honor Band
Concert Band	Encore!	All-State Honor Band
Marching Band	Solo & Ensemble	All-County Honor Band
Color Guard	Tri-State Honor Band	

Band Director & Staff:

In addition to the faculty instructors provided by the Broward County Schools, the band utilizes additional instructors provided by CCHSBPA. Listed below are the primary instructors for the 2009-2010 season.

Christopher J. Schletter	Director of Bands
Hayden Rhodes	Guard Director/Designer
Jed Davis	Percussion Instructor/Writer
Jeff Bridges	Visual Designer/Concert Instructor

Parent Association Board of Directors:

Executive Board members are selected in May. The old and new boards meet jointly until the general meeting in June to provide a smooth transition. The term of office for Board Members is one year, running from June to June.

Director of Bands	Christopher J. Schletter	754-323-0227	schletter@gmail.com
President	Marty Shuham	954-260-2198	marty@shuham.com
Treasurer	Jeanette Weisburg	954-443-5272	jen_weisberg@yahoo.com
Secretary	Gary Leeds	954-415-2547	leeds.gary@yahoo.com
1 st VP Fundraising	Art Nardin	954-205-0995	camerone@ilcs.net
2 nd VP Operations	Andrea Hansen	954-242-1308	Andrea_Hansen@sheriff.org
3 rd Co-VP Guard	Martha Norato	954-599-5209	martha_norato@sheriff.org
3 rd Co-VP Guard	Gigi Morales	954-494-1370	gigi@altira.com

Table of Contents

WELCOME:	2
THE VISION OF THE COOPER CITY HIGH SCHOOL SOUND OF PRIDE BAND AND COLOR GUARD PROGRAM:	2
AVAILABLE PERFORMANCE ENSEMBLES	2
BAND DIRECTOR & STAFF:	2
MEMBERSHIP	4
COOPER CITY HIGH SCHOOL BAND COURSE OFFERINGS	4
INDOOR PERFORMANCE ENSEMBLES	4
WIND & PERCUSSION BANDS	4
COLOR GUARD (EURHYTHMICS) CLASS	5
PERCUSSION CLASS	6
THE SOUND OF PRIDE MARCHING BAND.....	6
HONORS CREDIT.....	6
MARCHING BAND	7
COMPETITIVE MARCHING BAND.....	7
ALTERNATE STATUS & THE “COWBOY” SHOW	7
PHYSICAL REQUIREMENTS OF THE MARCHING BAND	7
REGULAR SEASON MARCHING BAND REHEARSALS	9
INDIVIDUAL MEMBERSHIP POLICIES, GUIDELINES, CORE FEES & PROGRAM FEES	10
GRADING POLICY.....	10
ATTENDANCE	11
EXCUSED ABSENCES	11
STUDENT/PARENT CONDUCT	12
OVERALL GENERAL DISCIPLINE	13
CLASSROOM PROCEDURES.....	13
GENERAL BAND POLICIES/GUIDELINES.....	13
POLICIES WHILE TRAVELING.....	14
UNIFORMS	15
FEES AND COSTS:	16
CORE FEES.....	16
MARCHING BAND PROGRAM FEES.....	17
MULTIPLE CHILD FAMILIES:.....	17
STUDENT ACCOUNTS.....	18
ADDITIONAL INFORMATION	19
ANNUAL AWARDS BANQUET	19
DRUM CORPS	19
BAND LEADERS.....	20
BAND COUNCIL	20
LEADERSHIP MEETINGS.....	20
PARENTS & VOLUNTEERS	24
BAND CONTACT INFO SHEET	27
CCHS BAND CONTACT INFO SHEET	27
COLOR GUARD UNIFORM/APPAREL/GEAR FORM 2009-2010	28
MARCHING BAND UNIFORM/APPAREL/GEAR FORM 2009-2010	29
STUDENT AND PARENT ACKNOWLEDGMENT AND AGREEMENT	33

Membership

With the Band Director's approval, membership in any band or color guard activity is open to **all** Cooper City High School Students (**No** prior experience is necessary). Placement in the various classes is determined by a playing audition and/or the recommendation of your previous band director.

Membership in the Sound of Pride Marching Band is recommended to all students enrolled in a band or eurhythmics (guard) class. Participation in concert band is permitted without participation in marching band, though it is highly recommended. However, all students that want to perform with the Wind Ensemble must be a member of the Sound of Pride Marching Band. Any possible exceptions are determined by the Band Director in consultation with parents, a physician, and/or an administrator - **there are very few exceptions**.

Participation is a full year commitment! Once the school year begins, schedule changes out of the band program will not be considered. Should a conflict between band, another school activity, sport, or community activity develop, you need to schedule an immediate conference with the Band Director. **Let the director help you to resolve the conflict so that you are not caught in an awkward situation.**

COOPER CITY HIGH SCHOOL BAND COURSE OFFERINGS

Band Courses in Broward County are a performance based curriculum with marching band being a co-curricular, **not** extracurricular, activity as the music being performed is rehearsed primarily during class time. Students are assessed based on their ability to perform the literature in a satisfactory manner. BCPS Course Descriptions for High School Band I through IV state the following: *"This course requires extra rehearsals and performances beyond the school day. Participation in this course requires a commitment to a one year course of study for two credits."*

Indoor Performance Ensembles

To be a member of any of the performing ensembles at Cooper City High School, the student must be enrolled in the appropriate band, percussion, or guard class. Placement into each class or ensemble is based on audition, ability, attitude, and work ethic. Each student must comply with all guidelines and regulations for that particular performance ensemble. ***The student agrees to attend all after-school rehearsals, sectionals, and performances*** (exceptions made in advance through director approval only). Each member must be in good standing within the band program. Fees are assessed to all participants in any of these portions of the program.

Wind & Percussion Bands

At Cooper City High School we try to have three concert bands each consisting of different level players to facilitate the best environment for each student to progress appropriately from one year to the next. Placement into our top group, the Wind Ensemble is done through audition. Only the Wind Ensemble members have the additional requirement of participating in marching band. Everyone auditions in the spring of the year except the incoming freshmen and their placement may change from one semester to the next depending on their ability level, attitude, and progress made since the beginning of the year.

Concert Band

The Concert Band is the fundamental level band and is primarily made up of ninth graders and/or 1st time players. These students will study and perform the best literature in the grade ranges of I thru IV on the FBA listing. The class meets one period a day and after school during the concert season. The Concert Band performs

at the annual FBA Concert Festival, presents public concerts, other FBA sponsored events, and Encore! at the end of the year. Extra rehearsals and performances, beyond the school day will be required.

Symphonic Band

The Symphonic Band is the second level band and is made up of all grade levels. These students will study and perform music of II thru V on the FBA listing. The class meets one period per day, rehearses after school rehearsals during concert season, performs at the annual FBA Concert Festival, presents public concerts, and participates in other FBA sponsored events. Extra rehearsals and performances, beyond the school day are required.

Wind Ensemble

The Wind Ensemble is the third level and principal concert organization, attending FBA sponsored events. Membership is determined by competitive audition of all band members. The instrumentation of the Wind Ensemble is pre-determined by an ideal standard, and once that instrumentation is filled, no additional members are accepted. Members of the Wind Ensemble are also expected to be active participants of The Sound of Pride Marching Band, and any member who fails to maintain a consistently high level of musicianship may be rescheduled to another band class. Extra rehearsals and performances, beyond the school day are required.

**Auditions will be held at the end of each year for placement in the bands for the upcoming year. Everyone except graduating seniors must go through this process. Even if you qualify to exempt the exam, or do not plan to return for the upcoming year, this process is a course requirement. Incoming freshmen and new transfers will be placed in the appropriate ensemble in the second semester for appropriate evaluation time by the band director.

Color Guard (Eurhythmics) Class

The Color Guard is a group open to all members of the CCHS student body interested in the art of performing with this ensemble. Each student must comply with all rules and regulations for the organization. The student agrees to attend all after-school rehearsals and performances as a member of the Marching Band and Winter Guard. (Exceptions made in advance through band director approval only). Each member must be in good standing within the band program. Placement into the Varsity or Junior Varsity winter guard is based on an audition and the student's performance and attitude during the previous season. Fees are assessed to all participants in this portion of the program.

Color Guard/Winter Guard

The color Guard is a group open to all members of the CCHS student body interested in the art of performing with this ensemble. Color Guard members must be enrolled in the Eurhythmics class which is scheduled during the 4th Hour and meets daily. In addition to learning to spin flags, rifles and sabers, the class includes physical conditioning and dance/movement training. Therefore, students enrolled in the Eurhythmics class are expected to dress appropriately for each class session. Because of the physical nature of the Eurhythmics class, students with physical limitations, especially those involving shoulders, knees and ankles need to discuss these conditions with the Color Guard dance instructor prior to beginning training. Students will be instructed as to what precautions should be taken to avoid injury. In some cases limitations and/or injuries may interfere so much that the student will be placed on "alternate status" until such time as the instructors and Band Director feel the student is able to perform without risking personal injury or the integrity of the program. Each student must comply with all rules and regulations for the organization. The student agrees to attend all after-school rehearsals and performances as a member of the Sound of Pride and Winter Guard. In order for students to participate in the Winter Guard program, he/she MUST be an active member of the band program (exceptions made in advance through the Band Director only) and in good standing will all fees and obligations to the organization up to date. Additional fees apply to the Winter Guard Program.

Floor Crew

This is another small group of students within the winter guard portion of the program that helps the winter guards with their equipment and floor at every show. There is a small fee assessed to members of this crew in addition to travel costs, but each of these students would get service hours for each show that they participate at.

Percussion Class

The Percussion Ensemble is scheduled during the 4th period and meets daily. This class will include, but not be limited to, marching band percussion section, all concert band percussion sections, concert, pop, and chamber percussion ensembles. Each student must comply with all rules and regulations for that particular organization. The student agrees to attend all after-school rehearsals and performances as a member of the Marching Band and for the various bands to which members are assigned (exceptions made in advance through band director approval only). Each member must be in good standing within the band program. Fees are assessed to all participants in this portion of the program.

Percussion Ensemble

A class dedicated to percussion students with specialized instruction on each of the percussion instruments. The percussion class operates in a variety of ways as they study and perform percussion ensemble music, servicing each of the concert band organizations as the percussion section for their assigned band, and as the drum line and "pit" for The Sound of Pride Marching Band. These students will participate in the FBA Solo & Ensemble Festival being placed into small concert percussion ensembles with the option to perform a solo. In addition, all percussion students participate and are a major part of Encore! at the end of the year. All parts of this class are required events. Extra rehearsals and performances beyond the school day are required.

The Sound of Pride Marching Band

The Sound of Pride Marching Band is a co-curricular after school activity that is linked to the band, percussion, or guard class that the student is registered for during the school day. Participation in this ensemble is not mandatory, although it is extremely recommended for the sole reason that those students will be offered much more opportunity for additional instruction, one on one instruction, and more chances to perform. Fees are assessed to all participants in this portion of the program.

Honors Credit

Currently honors credit is offered to wind and percussion students only; and this option is available to all grade levels. These requirements will be posted online and can be discussed in detail with the band director at any time. These requirements are generally broken up on a per-quarter basis and after all requirements are fulfilled, then the honors credit is retroactively applied to the past school year. Currently, the Florida Department of Education makes no provisions for Honors credit in Eurhythmics. That is the only reason we currently do not offer this opportunity.

Attitude is not just important, it's everything!!!

Marching Band

To be a member of the Cooper City Marching Band, the student must be enrolled in a band, percussion, or guard class and maintain a GPA of at least a 2.0 (“C” avg.). No students will be allowed to participate in the marching band without being in a band class during the day. Exceptions are made only in very rare and specific situations along with a parent/teacher/student conference. Any student receiving more than one “F” on their report card will be sidelined and will not be able to participate until either one or both grades are brought up, regardless of GPA. Marching band is a co-curricular activity and those students’ participation will be reflected in their grade.

Competitive Marching Band

The student agrees to attend all summer rehearsals when the student is in town and is *required* to attend both band camps. Exceptions must be approved by the Band Director in advance. Each member must meet all financial obligations and must attend all rehearsals and performances (contests, football games, and parades). Fundraisers will be available to help meet financial obligations. If a student cannot participate in football games and Saturday competitions, they cannot participate in marching band. (Please refer to the grading policy.)

Alternate Status & the “Cowboy” Show

These students must meet all requirements of the competitive Marching Band. These students will rehearse and perform with the marching band during the “Cowboy” halftime show and possibly earn a permanent spot in the competitive show at any time when deemed appropriate by the director. Until these students gain a permanent spot in the competitive show, they will perform the competitive show standing on the sideline next to the front ensemble. Alternates are considered full-fledged members of the Marching Band. Alternates are expected to attend all rehearsals as per the rehearsal policy.

Alternates may be rotated in and out on a per performance basis in order to provide the opportunity for more students to perform. Alternates will travel on all trips with the Marching Band. Alternate status is determined by the director based on musical and marching ability, as well as attendance.

Physical Requirements of the Marching Band

Due to the very nature of the marching band, students must be conscious of their personal fitness and general health condition. During a marching band rehearsal or performance the heart rate increases significantly due to marching at various tempos, while playing an instrument or performing on other equipment at the same time. This is the reason that marching band used to waive the physical education requirements.

Your diet should be balanced and your caffeine intake kept to a minimum. Avoid excessive dairy products prior to long periods of sun exposure, and keep yourself well hydrated during these times.

In order to increase your breathing capacity, band members will run/walk in timed exercises beginning with small time increments and gradually increasing. They will also learn proper stretching techniques to help avoid muscle injury, and will be asked to do various exercises (including pushups or abdominal crunches) to further their conditioning.

Upper and lower body strength, breathing capacity, and general coordination, as well as your general overall health should improve as our season develops.

Students with limited physical strength or other physical considerations will be asked to improve their sense of physical well being thru alternate means.

Summer Rehearsals and Info

Band Camp #1

The first band camp is held June 10th – 13th from 10:00 a.m. - 9:00 p.m. This camp will involve basic movement and marching fundamentals. Instruments are required. This camp is for all students participating in band in the 2009-2010 season, including incoming freshmen. These rehearsals are mandatory. Appropriate attire required. No jeans, flip flops or sandals. The student must wear clothes that he/she can move around in comfortably.

Tuesday Night Summer Practice

Tuesday practices from 5:30 pm – 9 pm begin on June 16th and run for the remainder of the summer. During these rehearsals, students will be taught basic marching fundamentals, music, flag and dance routines and the traditions of the *Sound of Pride*. **These rehearsals are EXPECTED if you are in town.** Unexcused absences from Summer Band Camp may place students on alternate status for the upcoming season. Whether you think so or not, it does get back to the director that you are skipping out on rehearsal when you don't feel like coming. ***This is for one day a week.*** Please, make sure you are there.

Mini-Camps:

Color Guard

None this year.

Percussion

All percussionists are required to participate in a mini-camp beginning Monday July 27th – Thursday July 30th from 5:30 pm – 9:00 p.m.

Band Camp Registration

Registration for the Band Camp will be held on Sunday, Aug. 9th in the CCHS cafeteria. We would like all the 9th graders to come in at 9am for registration, all the 10th graders at 10am, all 11th graders at 11am and all 12th graders come in at noon. This is when forms will be turned in for yearly events along with fee payments that are due. All forms to be turned in will be provided to you at registration. Please, double check both to make sure you have everything turned in.

Band Camp

Band Camp is two weeks long this year. We begin August 10th – 13th, Monday through Thursday, 10:00 a.m. – 9:00 p.m. and then Aug. 17th – 21st, Monday through Friday, 4 p.m. – 9 p.m. Both are an intense week of learning and training for all band and guard members in preparation for the upcoming marching season. It is during this time that the competitive music and show design will be taught and your attendance is imperative.

The purpose of band camp is not just to practice (although there is plenty of that); band camp provides the opportunity for band members to get to know one another and form a supportive and cohesive unit. Band members spend a great deal of time together, and it is vitally important that they all work together to become the best they can be. Band camp provides the atmosphere to get the marching season off to a great start.

Band Camp week is absolutely mandatory for the entire band. This is when the marching routines are taught and it is necessary to have 100% attendance. ***Failure to attend band camp may be cause for being written out of the show.***

Meals During Band Camp

The first week of band camp starts at 10:00 a.m. this year and lunch must be provided by the student/parents each day. Students are not to leave school grounds as they are under school supervision at that time. Dinner will be made available during band camp for \$7.00 per meal (which includes a complete and well balanced meal). Students may bring their own dinner in lieu of paying for a meal as well. A form will be provided to the parents at registration to sign up and order meals.

Regular Season Marching Band Rehearsals

Our regular rehearsal schedule is as follows: Tuesday & Thursday of each week from 5:15 to 8:45. There are a few occasions that the schedule is adjusted to due to a change in the football schedule (i.e. Thursday night football games) but we generally try to stay with this schedule. Student drop off time is 5:00 p.m. and pick up time is 9:00

Many parents enjoy arriving early to pick up their student just to see a run through of the show and how things are progressing. However, if the presence of the parent(s) becomes a distraction or a detriment, the director reserves the right to ask the parents to leave and continue with a closed rehearsal situation. These evening practices continue throughout the marching season. Occasional Saturday practices are also held. Brief Saturday rehearsals are held on competition days. A schedule of all rehearsals and performances will be posted on our Web page at www.coopercityhighband.com. A tentative schedule of the fall marching season is provided herein.

Students are expected to be at school, in the band room no later than 15 minutes prior to the start of each rehearsal and ready to go 5 minutes prior to the rehearsal start time. The students are not to linger on campus after each and every event. The same is true for report times given on all itineraries.

Game Day Rehearsals:

These rehearsals will occur at 3:30 each home game day. Meals are provided before all games at the cost of \$7.00 per meal for each student. Itineraries are always posted on the web site by Monday of each week (www.coopercityhighband.com).

- ❖ In the event that the football season is extended for playoffs, students will be responsible for performing for those games as well. The students will be given as much advance notice as the band director receives.

Saturday Competitions:

Rehearsals before local competitions will be from 8am – 11am on each competition day. Complete itineraries are distributed on each Monday covering the entire weekend's itinerary. Information will be posted on the website by Wednesday of each week (www.coopercityhighband.com).

Marching Band Responsibilities In The Stadium

1. The band has inspection one hour prior to game. The band usually enters the stadium about twenty minutes before game time.
2. Band members sit in the stands by section and in parade order. There is no moving from seat to seat.
3. Band does not eat in the stadium. Only water is allowed (and usually supplied).
4. Students may be excused to use the restroom by the Band Captain or Drum Major during the third quarter only and must be accompanied by a parent. Other emergencies must be excused by the director -- a chaperone must accompany.
5. No group or clique cheering --- cheer only with the cheerleaders. Band members should also avoid jumping as the team scores a touchdown. We appreciate the enthusiasm, but instruments may be damaged in the process.

6. No playing by individual members --- we only play as an ensemble. Section "charges and cheers" (approved by the director) are encouraged.
7. All eyes shall focus on the Drum Major or the Band Director when they stand in front of the band; you never know when we will play! This is necessary for the disbursement of information as well.
8. After the game the band plays a short post-game concert and then troops the stands and head to the band room.
9. Band is dismissed from the band room together by the Drum Majors after the director addresses the band.

Inspection

Inspection is conducted before each marching band performance. The following are checked:

1. Neatness, cleanliness, and proper fitting of the uniform.
2. Shoes polished and correct socks and gloves worn.
3. Uniform worn properly.
4. Cleanliness and proper working condition of instrument and equipment.
5. Hair must not touch uniform collar.
6. No sunglasses.
7. No make-up (except as specified for guard members).
8. No jewelry --- gloves on or off (religious exceptions may be made).
9. Drum sticks and mallets freshly taped.

Individual Membership Policies, Guidelines, Core Fees & Program Fees

Those students who have a positive mental attitude, regardless of their individual skills, will always have a place in the Cooper City Band Program! Regardless of your ability, if your attitude is not positive and you are not doing your personal best to make the group successful, you should not be a part of this organization. In fact, students who do not project an attitude that is positive and cooperative will be given the opportunity to either change their personal perspective or else leave the organization. Those who have pride in themselves will usually project a positive mental attitude. Characteristics of a positive mental attitude include a generally cheerful outlook toward rehearsals and performances, cooperation in the preparation and maintenance of equipment and facilities, and an eagerness to do whatever is necessary to be successful. In short, the total band member is someone who always will give his or her best effort for the good of the organization.

Grading Policy

The Grade of each student is based on a simple point system. If the students participate each day, there is no reason a student should have anything less than 100%. All in class assignments missed due to absence can be made up at anytime before the end of the grading period. The following is a list of graded activities:

- **In-class Participation/Dressing out for color guard**
- **Test Grades** (Will vary depending upon the season)
- **Marching Band activities /rehearsals**
- **Listening Journals**
- **Video Worksheets/Theory Packets/Ensemble Evaluations**
- **Performance**
 - **Missing a marching performance lowers grade one letter**
 - **Missing a concert performance lowers grade two letters**

Note: Any notification for missing a football game performance, marching competition, concert band performance, or Encore! performance must be done a month in advance. For any added events or performances other than what is

currently on the calendar, notice must be given at least two weeks in advance. If an added event or performance is given two weeks of notice or less, then any conflicts will be excused and no student's grade will be marked down.

In-class participation takes into account the following considerations:

- Seated with instrument, music, and pencil 5 minutes after the bell rings
- Proper seating posture and position
- Proper holding techniques of the instrument
- No unnecessary items with you (phone, iPod, etc.)
- No other homework or reading is permitted during the class time in band.
- **Respect for the podium** and displaying a willingness to work consistently.
(Respect for podium is an international standard of courtesy among musicians --- once the conductor steps on the podium, all playing and talking ceases, and the attention of the entire group is focused on the conductor)
- Dressed out in appropriate attire 10 minutes after the bell rings for the color guard class
- Percussion is set up with all equipment, binders of music, and mallet bags 5 minutes after the bell rings

Test Grades

Test may be given at any time on any musical excerpt from assigned music, including any scales, arpeggios, rhythms studies, or other assigned literature. During the marching season, this will certainly include the inspection process and the dot book/binder checks. Inspection, dot book, and binder check are pass/fail. Either you've done the work or you haven't done the work.

Performance and Rehearsal participation

If you are present and participate in a cooperative manner, this is the easiest part of earning the grade of A. Points may be deducted for unexcused after school absences as outlined in the previous attendance policy section.

Making up Performances

No performance can be made up. There is no substitution for an ensemble performance. Measuring how a student performs with an ensemble can only be done within an ensemble. If there is a schedule conflict with a performance and notice is given well in advance, then measures may be taken in advance to replace the performance grade for at least half credit. This will be decided upon on an individual basis.

Attendance

Attendance at all rehearsals and performances is vitally important! The band functions as a total unit, and anytime you are absent it diminishes the result obtained by all other band members. Every member of the band is important, and you are no less important than a soloist, the section leader, or the Drum Major. All students must make every effort possible to be at every rehearsal the entire time. During the marching season, if you do not attend a rehearsal, you will run the risk of not participating in that Friday or Saturday's performances. Due to how much we try to cover in each rehearsal and the limited amount of time we rehearse, it only takes one rehearsal missed to set a student back a long time. During the concert season, if a student misses 3 or more after school rehearsals, the student will run the risk of not participating in the following performance.

Attendance will be taken at all rehearsals and performances just like in class and will be recorded. All band events are inclusive in the co-curricular class setting, and will affect all band students' grades. Missing rehearsals, sectionals, or any other type practice will lower a student's grade (time can be made up by staying after school or rehearsals to put back in the time that was missed). **Missing a performance of any type unexcused will immediately drop a student's grade by one or two letter grades.** (Please refer to the grading policy.)

Excused Absences

Only serious medical or family emergencies are excused. A death in the family is never questioned. Medical excuses are determined as mentioned earlier --- by consultation between the physician, parent and director. It only takes one person missing to affect the entire ensemble. We all rely on each other more than you know.

Students need to arrange their work schedule to accommodate the band schedule. Missing for work is never excused. Any student who finds that work interferes with attendance may be excluded from remaining activities at the discretion of the director. Leaders may be removed from their position for missing a band event due to work.

Please try at all times to arrange Doctor and Dental appointments **around the band schedule --- ours is consistent, and with planning, this is easy to do in most instances. Always check the calendar.** This is not an acceptable excuse.

Family trips are not excused absences unless planned well in advance of the band schedule. You know that the marching band is committed for several weekends for the duration of football game and marching competition season. Concert dates and other events of the second semester are published well in advance. In case of emergency absence, call the band room and speak to the band director – he is the ONLY person who may excuse an absence. If no one answers, please leave a message or you may email your absence with full explanation to soundofpride@gmail.com.

Excusable absences would include:

Sick from school
Death in the family
Religious holidays
Immediate Family Emergency

Non-excusable absences would include, but not limited to:

Dentist/orthodontist appointments
Driving test
Homework (you must learn to budget your time wisely)
Attendance at rock concerts or pro-sporting events
Birthdays/Anniversaries
Work
Trips that aren't given as much lead notice as possible (for example, you know you are going to be at a family wedding, and you don't notify the director until the last moment)
Didn't have a ride (your section leader can help you find a carpool within the band)

All band events for the year are scheduled and are on the website for your clarification and your use as you schedule other non-band events. Sometimes events will be added and participation is mandatory. Notice will be at least two weeks in advance when possible and conflicts will be handled on a per person basis. Any band events not scheduled at least two weeks in advance will be expected but will not be made mandatory.

Student/Parent Conduct

The Broward County Public Schools Code of Conduct applies to all students on all activities and trips. Members of the Sound of Pride are expected to be professional adults at all times while representing Cooper City. We are representatives of our school, community, state, and nation, and we display Pride in membership and respect for others at all times! You must remember where you are and who you are around at all times. Parents, students, staff, or administration from other schools or communities can easily be nearby and we do not want to give off the impression that we are anything less than a professional and class act. Be a part of the team and you won't have any issues. Be proud of your program, but do not judge others. If you have anything negative to say about another program at all, you will wait until you are behind closed doors to say it, if at all.

Overall General Discipline

For any organization, particularly a large one, to run smoothly and efficiently, the overall general discipline must be consistent. The organization must come first while at rehearsal or at a band/guard function. However, to ensure fair treatment, and the director's respect for students, the following policy will apply to all individuals within the organization:

1. Any act of misconduct or violation of band policies will result in a director/student conference. The director will point out the violation to the student, explaining his point of view. It would be possible here to successfully solve the problem.
2. Same student, second offense, not necessarily the same offense will result in a conference with student, parent, director, and/or administrator. It is possible here to successfully solve the problem; however, dismissal from the course with possible loss of credit is also a potential outcome. This conference will be documented.
3. Same student, third offense, not necessarily the preceding offenses will result in a second conference with student, parent, director and administrator. It is possible to solve the problem at this step; however, please be advised that dismissal from the band program, with possible loss of credit is also an option at this time.

Classroom Procedures

- All students are to be in the band room before the tardy bell sounds. At five minutes after the bell, each student is to be seated in the proper place, with instrument, stand, music, pencil, and any other equipment item necessary for rehearsal. There will be silence in the rehearsal hall when the Director steps onto the podium.
- Warm-up is a crucial time in each rehearsal. It is when we focus on the fundamentals of our playing so that we may improve both as a group and as individuals.
- Brass players should have all necessary mutes and valve oil by your side. Reed players should always have at least one spare reed at their seat during each rehearsal (and performance). Ideally you should have four or five "good reeds" that you rotate from day to day, and a reed guard for proper storage.
- Cases should be left in the storage cabinets or around the walls of the rehearsal room. They are unnecessary obstructions in the rehearsal area. All chairs and stands will be put away at the end of each day, every day!
- Percussionists should always have their mallet bag, with the appropriate sticks, mallets, their music binder, and pencil for each rehearsal. Percussion equipment is to be put away at the end of each rehearsal, and properly cased or covered. Sticks and mallets should be put away in a safe place or taken home.
- If you wish to have a locker for your equipment or personal belongings during rehearsal, you may get a locker assigned to you with a school lock. **All lockers are school property and are subject for search at all times.**
- You are not to have reading or homework for other classes during band time.
- *Problems of an individual nature (missing music, instrument problem, etc.) should not take class time. **These issues should be dealt with before school, after school, or as a last resort, just before class.***

General Band Policies/Guidelines

1. Be in your seat, warmed-up, and ready to begin ON TIME!
2. No food or drink is allowed inside the music suite.
3. Chewing gum is NOT permitted during any rehearsal or performance situation.
4. Respect other people's property and the property of the school.
5. Show respect to all directors, administrators, teachers, band staff and band parents at all times.
6. Keep your language CLEAN! You never know who may be listening.
7. Insubordination will NOT be tolerated.
8. NEVER disrespect another band or its members, EVER!
9. Public display of affection is not allowed while on "band time."
10. There will be NO hazing of "rookies" or new members at any time.
11. A band member must respect his/her uniform at all times.

12. Shoes and socks must be worn at all marching rehearsals. (marching band)
13. A band member will wear no visible jewelry, fingernail polish, or excessive make-up while in uniform. Leave expensive jewelry at home. (marching band)
14. Remember that you are a CLASS ACT. Do not do anything that would have to be explained. Always conduct yourselves as Ladies and Gentlemen.

Policies While Traveling

1. All policies from our student code of conduct apply in all travel situations.
2. Drinking of alcoholic beverages and taking of non-prescription drugs will not be tolerated. Administrative action will occur with the strong possibility of removal from the band program and suspension or expulsion from school. Anyone found grossly misbehaving will be dealt with by the director, and may be sent home. It is the parents' responsibility to pick up misbehaving students.
3. All students are on notice that their bags are subject to search for contraband by CCHS administration, the Band Director or parent chaperones at all times while traveling.
4. Students are expected to behave at all times while in a hotel/motel situation. Anyone found grossly misbehaving will be dealt with by the director, and may be sent home. It is the parents' responsibility to pick up misbehaving students.
5. Band members are not permitted in any other rooms after hours on away trips. No unauthorized persons will be allowed to visit.
6. Parents and students will be held responsible for any property damage and lost room keys.
7. Shirts and shoes are to be worn at all times.
8. Rooms are to be locked at all times.
9. Courtesy is expected in the dining facility. Other groups use these facilities as well; don't forget common courtesy. We are guests at these facilities along with others that may be staying there.
10. No food, glasses, dishes, signs, towels, etc. are to be taken from any area of the hotel/motel.
11. Please refrain from playing instruments in the rooms.
12. No one is allowed to leave the hotel/motel premises without permission from the Director. Any student found doing so will be dealt with severely by the Director.
13. Profanity is NOT a part of the Cooper City Band Program. Make sure that your language is never offensive while with the band.
14. Follow all instructions of the Director and Chaperones at all times. If you do not understand --- ASK!

REMEMBER: *Young adults do not rough-house or damage property. As CCHS Band members you reflect not only the values you learn at CCHS, but those of your community as well. Sound of Pride members are expected to be at the right place, at the right time, with the right equipment -- ready to go!!!*

***PROFESSIONALISM:
IT'S NOT THE JOB YOU DO,
IT'S HOW YOU DO THE JOB.***

Uniforms

Concert Band

Men wear a full tuxedo. The jacket, pants, cummerbund, and tie will be assigned by the band program. Student will be responsible for a white tux shirt, in addition to black socks and black shoes.

Ladies will be wearing a black blouse and skirt supplied by the band program. Students are responsible for black, close toed shoes with a heel no larger than one inch.

Marching Band

FORMAL: Supplied by the school is the aussie with plume, jacket, and trousers. Students supply the specified marching shoes, black socks and black gloves.

INFORMAL: Supplied by the student is the red polo shirt, black pants, black socks and marching shoes.

Information and pricing is provided on the order form at the back of the handbook.

Color Guard

FORMAL: For the marching band and winter guards, the uniform is new and different every year and may include approved jazz sneakers, guard gloves, with hair and make-up style selected by the instructors. All undergarments should be properly secured so that they do not show when the uniform is worn.

CASUAL: For the full year the guard will use the black and red guard shirt, black jazz pants, black socks, and black jazz sneakers. The hair and make-up will be done as directed by the instructors. Guard jacket/warm-up suit can be worn (with Band Director approval) but not during a performance.

Additional uniform guidelines apply to the Color Guard for all practices. This is done to help the Band Director and the instructors distinguish between the guard members and the rest of the band. Practice uniform will consist of red or black shorts and a white shirt. Sneakers and socks must be worn to all outdoor practices. Guard members may opt to wear ballet slippers for indoor rehearsals. Members should discuss styles with the instructors before purchasing shoes for this purpose.

“CHAMPIONS ARE MADE FROM SOMETHING THEY
HAVE DEEP INSIDE THEM, A DESIRE, A DREAM, A VISION.
THEY HAVE TO HAVE LAST-MINUTE STAMINA, THEY
HAVE TO BE A LITTLE FASTER, THEY HAVE TO HAVE THE
SKILL AND THE WILL.
BUT THE WILL MUST BE STRONGER THAN THE SKILL.”

- Muhammad Ali

FEES AND COSTS:

The fees and costs covered here are for student members of the band program and were adopted by the Board of Directors.

All payments are to be made payable to "CCHSBPA." Payment is available via credit card as well.

This program functions at a high level and requires additional funding that the state does not provide. The majority of the responsibility for meeting the financial needs of our band program rest on the shoulders of the band members and band parents.

- **Core Fee** – The Core Fee is assessed to all students in the Sound of Pride program regardless of their participation in any wind/percussion band, percussion ensemble, color guard or marching band. This fee is required of each student in the program to cover the year long expenses that are involved with keeping our indoor and some after school rehearsals and activities funded.
- **Program Fees** – These fees are primarily assessed to students participating in the marching band part of the program. However, if there is an expansion to the program, another program fee may have to be assessed to cover those new expenses. (i.e. – competitive winter percussion program)
- **Trip Fees** – These fees are kept separate from the Core and Program fees as they are very specific to the group traveling and to the particular trip and destination. These fees will be assessed as necessary to all those students participating in the trip. (i.e. – FMBC State Marching Competition or Winter Guard trips)

Fundraising events are scheduled throughout the year to help each student offset these costs. Those who need to make special arrangements will need to speak with the band director on an individual basis. **No one** will be denied participation because of financial hardship *as long as steps are being taken to fulfill the obligations*. HOWEVER, if band fees are not paid prior to October 9, 2009, then that student may be removed from extra- or co-curricular activities funded by this money that will take place either in class or after school. Further, the students in marching band can be placed into alternate status until such time as their outstanding balance is brought current OR arrangements are made with the Band Director for paying such fees. Moreover, any student officer who does not have their band fees paid as of October 9, 2009, and has likewise made no arrangements with the Band Director for paying such fees, may be removed from their leadership position at the Band Director's sole discretion.

Core Fees

The Core Fee is assessed to all students in the Sound of Pride program regardless of their participation in any wind/percussion band, percussion ensemble, color guard or marching band. This is a fee that is required of each student in the program to cover the year long expenses that are involved with every aspect of the program. The Core Fee this year is **\$150** for each student and is defined further in the *Fees and Cost* section of the handbook.

All students that are in any band, percussion, or color guard class are required to pay this. Unfortunately, with the budget cuts, it's beginning to get more and more difficult to stay on top of all expenses. Constant budget cuts are occurring in our school system. The only way to continue to improve the level of performance is to continue to raise the necessary funds so that we can continue to offer the many different opportunities to the members of the program.

The \$150 core fee is in place to fund such things as guest clinicians to come work with any and all groups, equipment that may need to be fixed or replaced, music and materials for the class room, FBA costs, and much more.

*For all students that are not involved in marching band, your **\$150** core fee due date is October 9, 2009.*

Marching Band Program Fees

The board has adopted the following fee schedule for the 2009-2010 season:

The total amount of the Marching Band Fee is **\$450.00**. If paid in full by August 9th, 2009, then the total marching band fee is discounted to **\$400.00**.

If you are participating in this portion of the program your total fees for the year are **\$600**. That is both the core fee of **\$150** and the marching band program fee of **\$450**. If you have already paid the **\$50** spot fee at the beginning of the summer, then the remaining balance of the marching band fee is **\$550**.

If you cannot make the **\$600.00 (\$450.00 + \$150.00)** payment by August 9th, 2009, payments will be due in the following installments. Again, you will have already made the \$50 initial registration fee earlier in the season, but if you haven't then you may add the additional \$50 onto the last payment.

<u>Date Due</u>	<u>Band and Guard Members</u>
August 9 th , 2009	\$200.00
September 9 th , 2009	\$200.00
October 9 th , 2009	\$200.00 (or \$150 if you've already paid the initial spot fee.)

Additional Expenses will be due at Band Camp Registration. Such expenses shall include, but may not be limited to: (1) informal uniform, (2) marching shoes, (3) rain ponchos and other apparel or items necessary for their participation in the marching band program. Such fees are estimated at approximately \$100.00 for band members and \$175.00 for guard members. Parents will also have the opportunity to purchase meals for band camp and the marching season at registration.

If band fees are not paid prior to October 9th, 2009, then that student may be removed from the marching line and placed into alternate status until such time as their outstanding balance is brought current OR arrangements are made with the Band Director for paying such fees. Moreover, any student officer who does not have their band fees paid as of October 9th, 2009 and has likewise made no arrangements with the Band Director for paying such fees, may be removed from their leadership position at the Band Director's sole discretion. A Payment Agreement Form must be signed and is required if the above payment schedule is not possible. If you anticipate difficulty with the payment structure, please contact the Band Director as soon as possible. Winter Guard and Winter Percussion will have additional fees assessed in November, based on their decisions regarding area, regional and national competitions.

Multiple Child Families:

The total amount of the Marching Band Fee for each additional child is **\$350.00**. If paid in full by August 9th, 2009, then the total marching band fee is discounted to **\$300.00**.

If the second (or third) child is participating in this portion of the program your total fees for the year are **\$500**. That is both the core fee of **\$150** and the marching band program fee of **\$350**. If you have already paid the **\$50** spot fee at the beginning of the 1st band camp, then the remaining balance of the marching band fee is **\$300**.

If you cannot make the **\$500.00 (\$350.00 + \$150.00)** payment by August 9th, 2009, payments will be due in the following installments. Again, you will have already made the \$50 initial registration fee earlier in the season, but if you haven't then you may add the additional \$50 onto the last payment.

<u>Date Due</u>	<u>Band and Guard Members</u>
August 9 th , 2009	\$200.00
September 9 th , 2009	\$200.00
October 9 th , 2009	\$100.00 (or \$50 if you've already paid the initial spot fee.)

Again, fundraising events and payment plans will be available to ensure ALL STUDENTS who wish to participate are given the opportunity to do so. *Cost of the program should never be an excuse to not participate in this exceptional opportunity.*

****All fees are non-refundable****

Opportunities are provided through the fundraising program for students to earn credit toward fees and expenses. **Many students raise the entire cost of the program through fundraisers.** This is the best way to help offset the additional costs associated with being in the band.

All fees, trip costs and fundraising money should be paid by check or money order payable to **CCHSBPA** and mailed to the CCHSBPA **post office box** below. It is preferred that everyone mails their payments to the P.O. Box in order for us to keep accurate records for your student's account. However, if for some reason you're unable to mail your payments, you can still deposit them in the lockbox in the band room.

Jen Weisberg, Treasurer
Cooper City High School Band Parents Association
P.O. Box 848635
Pembroke Pines, Fl. 33084

To assure that credit is allocated properly, be sure to include your student's name as well as the purpose of the check on the memo line. Band fees do not cover consumable items such as the required shoes, socks, gloves, etc.

Students and parents have the choice of:

- Paying all fees and fundraising obligations with check, money order, or credit card
- Earning the entire cost through fundraisers
- Any combination of the above

Student Accounts

Students earn money through the various fundraising activities. Prior to each fundraiser, a form will be distributed explaining the guidelines, deadlines, student percentage and expected revenue. Students and parents may choose to participate in any combination of fundraisers to meet their obligation for the band program.

The Treasurer of the CCHSBPA and Band Director monitor student accounts. Should a student fall behind in fee payments or fundraising, a board member of the CCHSBPA will place a reminder letter or phone call. If an account remains in overdue, the matter will be referred to the Band Director. It is important to remember that CCHSBPA is also a business and must pay its bills on time.

Student money is carried over from year to year but is not transferable from student to student with the exception of siblings along with the approval of the CCHSBPA Board of Directors or the Band Director. Any credits in a student account at graduation or if a student leaves the program will be forfeited to the general account.

Band fees do not include the cost of competition or festival field trips (such as the Florida Marching Band Coalition State Marching Band competition). Band fees do not include the cost of items required for marching such as gloves, shoes, slacks. Students **may** apply fundraising money earned toward the cost of these expenses provided their account is in good standing.

If a student has extra money in his or her account after all fees have been paid for, then that student may utilize that money to pay for extra items such as banquet tickets, trip fees, music supplies, informal uniform or marching band supplies, or meals for marching season. Band items and expenses can only be charged to their account if the student has a positive balance and fills out and returns the account charge form signed by their parents.

Additional Information

This section is a collection of miscellaneous information that applies to everyone in the program. Please be sure to read this section carefully as it pertains to the end of the year events, rehearsals and schedules, leadership, and instrument rental & storage.

Annual Awards Banquet

In the spring of each year, just before the conclusion of school, the BPA hosts the annual awards banquet. This is an excellent family affair that celebrates the band's entire year of accomplishments. People generally dress up for this occasion. The banquet is for the students and is open to all their family members and guests they wish to invite.

Awards are presented to members of each class and all sections of the band. Please, parents, plan to attend this fun event! It is always sad when a student receives an award and family members are not there to share in the moment!

All fees must be paid in full in order to attend the banquet. No student who owes money will be able to attend the end of the year award band banquet as either a member or a guest. Any student that has terminated their membership may attend the banquet but does not qualify for any recognition or award. Seniors that terminate their membership will not qualify for senior recognition, any awards, or the senior gift.

Termination means that the student chooses to leave the program on his or her own accord and does not complete their commitment to the program. This does not apply to students that are required to change their schedule out of band due to class requirements and conflicts for graduation. However, that particular student is requested to stay involved as much as possible to attempt to fulfill as much of their commitment as possible, including (but not limited to) performing with an ensemble at FBA concert band festival and/or performing in Encore! at the end of the year.

Drum Corps

Drum Corps is a summer activity that is similar to marching band except there are no woodwinds involved. It's an activity that's been around for years and years. The oldest drum corps in existence today is The Holy Name Cadets currently based out of Allentown, PA. With drum corps rehearsal starting in late November or early December, these groups take the marching art as far as possible in excitement and excellence.

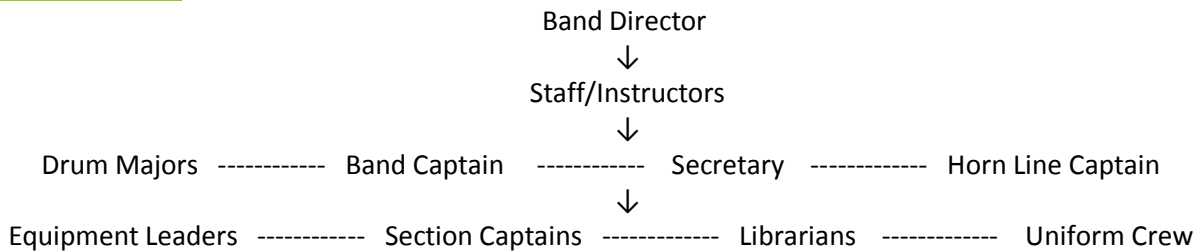
This activity has so much to offer band, percussion, and guard students alike. All the many things that our students learn here in the Cooper City H.S. Sound of Pride Band Program are further emphasized and focused upon in drum corps. This is really one of the greatest activities and learning experiences that are out there as it teaches you so many life lessons, allows you to build character and grow as an individual, and pushes you harder than ever before. If a student within the program wishes to participate in drum corps over the summer, I will support them in any way I can.

HOWEVER, at no time will a student of this program ever miss one of our rehearsals, performances, or events due to a drum corps activity. The Cooper City Sound of Pride Performance Ensembles come first. The only events that a student can miss are the summer rehearsal for the simple reason that drum corps occurs during the summer. During the school year a student cannot and will not miss any event for this reason or he/she will severely run the risk of being pulled from some or all Sound of Pride events or even worse, the program. If the student does join a drum corps in the winter months, it is expected that the student understands how to balance their schedule, drum corps is not discussed with the ensembles of Cooper City, and that no drum corps jackets are to be worn at any band event. We are the Cooper City Sound of Pride and that is who you will represent.

The only reason that drum corps are able to exist and excel today are because of fantastic programs such as ours. It is our program that is the priority, not the drum corps.

Band Leaders

Chain of Command



Band Council

The Band Council is made up of the Band Captain, Drum Majors, Secretary, Horn Line Captain, Battery Captain, Pit Captain, and Guard Captains. This council will meet bi-weekly and will discuss the developments within the program. If there are any internal issues or concerns between students or issues that the students may have with someone other than their peers, this is where it will be worked out. As leaders in the program it is important to have a sense of ownership and understand what it means to be able to see the big picture, work alongside each other, and be able to solve the problems as they arise. Many things will be discussed in these meeting and must be kept confidential within the council.

Leadership Meetings

Leadership meeting will take place every two weeks opposite the council meetings. These meetings require the attendance of all officers. Anyone else that would like to attend is more than welcome. These meetings are open to the entire music department. I encourage you all to bring a friend and come learn more about the leadership skills that not only help develop our music program further, but will help you understand how you use the skills learned here to take you through the rest of your life.

Band Staff

Paid professionals, technical assistants, and guest artists are a vital part of the band program. Without their help, the CCHS Band would not be able to achieve the standard to which we aspire. They must have the respect of all students and parents. Staff members are chosen by the Band Director and are directly responsible to him. Students and Parents should give these staff members the same respect they would give any member of the CCHS faculty. They are paid to design, instruct, and assist the band director. The full time staff members that we do have are responsible for making appropriate decisions in the absence of the Band Director. If a parent has any concerns or problems, these should be brought directly to the Band Director – **Parents should NOT confront a staff member.**

Instrument Rental

The Broward County School Board provides a VERY limited number of instruments at a rental fee of \$20.00 per school year. These are made available on a first come basis. All percussion students use school owned instruments all year so all percussion students are required to pay the rental fee. Rental checks are made payable to CCHS and a receipt is issued for your records. Please make sure your student returns this receipt to you. This is due at Camp Registration.

Care of the school owned instruments and equipment becomes the responsibility of the student to whom they are assigned. Any damage beyond normal wear and tear will need to be repaired at the student's expense. Students must properly case and close the instrument case after each use. Never is the case to be left open or only partially latched. *Please, place all equipment back where it belongs after you use it.*

Individual instruments must always be maintained in top playing condition. Always show the director your instrument before taking it in for repairs.

Remember that horseplay can cause damage to instruments and equipment. Be careful with your own instrument, place it out of harm's way if it is necessary for you to put it down, and never play on anyone else's instrument.

Instrument Storage

We are severely handicapped in this area. Just about every school in Broward County has individual instrument lockers provided for students for both personally owned instruments, and those owned by the school. Currently we have a few of these lockers and will continue to try to buy more. Until that time, we must make the best of the storage cabinets we have in our rehearsal hall. Students are assigned a specific cabinet and location within that cabinet for you to store your instrument. It is vital that your instrument have your name, address, and home phone number plainly displayed on the case. Instruments are NOT to be left on the floor--- only in an assigned cabinet space. Instrument cases are to be fully latched when the instruments are stored. Students are provided lockers by the school for personal and valuable items that they may keep during rehearsals, football games, and competitions.

Students are not to touch or handle an instrument other than your own assigned instrument. Only the owner may give you permission to do that, and only the Band Director can give you permission to touch one of the school owned instruments.

During rehearsal time, empty cases are to either be put back into the cabinet or left around the extremities of the rehearsal hall, next to the walls. They are not to be at your chair as they cause unnecessary obstruction to the rehearsal area.

Private Lessons

Private lessons are the single most important factor in developing an outstanding band program. Band students who study their instrument privately with a professional show rapid improvement in individual musicianship. As these students improve, their excitement towards practicing increases, they continue to improve and become a stronger contributor to the overall success of the band. Private lessons are the key to excellence on your chosen instrument, so start as soon as possible!

Students who study privately greatly increase their chances of being selected for one of the All-State Organizations. These auditions are highly competitive, and open to band students throughout the State of Florida. A listing of recommended teachers is available on our website. This list is by no means comprehensive, just a place for each family to begin the selection process.

Rehearsal Schedules

The marching season extends from the start of the school year until approximately the third week of November. After the conclusion of the marching season, our focus is shifted toward concert season and winter guard season. The year's rehearsal schedule is as follows:

Tuesday's and Thursday's:

- Marching Band – 5:15 p.m. – 8:45 p.m. (during marching season)
- Wind Ensemble – Tuesdays 5:00 p.m. – 8:00 p.m.
- Symphonic Band – Thursday's 3:00 p.m. – 6:00 p.m. (Please refer to the calendar frequently.)
- JV winter guard – Tues./Thurs. – 4:00 p.m. – 7:00 p.m. starting in December
- Varsity winter guard – Tues./Thurs. – 6:00 p.m. – 9:00 p.m. starting in December
- Percussion ensembles TBA starting in December

Additional rehearsals other than the scheduled Tuesday's and Thursday's will be called for any ensemble throughout the year and some are already on the calendar. At least two weeks notice will be given for any additional rehearsals with all students expected to attend, unless given less than two weeks notice, at which time attendance is will not be counted against the student.

Rehearsals will occur specifically at the times that are listed. Rehearsals times are given as the specific times we are in active rehearsal. The students have responsibilities prior to and after each rehearsal that don't require much time, but are necessary for a positive and successful rehearsal, as well as, proper upkeep & care of facilities and equipment.

Student drop off is 15 minutes prior to rehearsal (unless already at school) and student pick up begins 15 minutes after rehearsal ends.

Band Office

The band office at Cooper City High School is the business office of the CCHS Band Director and Band Parents. Students are not to be in the office without the permission of the Director. **The telephone is off limits to students except in an emergency.** All rehearsal times are published well in advance; **parents should not need a phone call to verify that we have dismissed on time.** On occasion where the band is arriving back at an unspecified time, the phone will be made available to student use.

Office computers are not to be used by students without the permission of the director. No computer games ever. The copier is for music and band related forms only; not your personal projects or homework.

If there is ever any question regarding the band program, please do not hesitate to call the band office (754-323-0227) and leave a message for the Band Director. Your call will be returned as soon as possible. As an alternative means of communication, the band has an updated website: www.coopercityhighband.com.

“Desire is the key to motivation, but it's determination and commitment to an unrelenting pursuit of your goal ~ a commitment to excellence ~ that will enable you to attain the success you seek.”

TENTATIVE 2009-2010 FALL SEASON SCHEDULE

In addition to the practice sessions referenced above, the following is the tentative schedule for games and competitions for the marching season. Please note that the schedule is subject to change based upon weather (i.e. hurricanes) or other factors that are unforeseen at the time of writing the handbook. If there are scheduling changes, you will be notified as soon as possible in advance so that you and your family may plan accordingly. It is our intent that you will be given at least 2 weeks notice prior to any rescheduled/added event or practice.

<u>Date</u>	<u>Event</u>	<u>Location</u>
August 24, 2009	School Starts	
September 4, 2009	1 st Football Game – Away	McArthur H.S.
September 5, 2009	Marching Band Rehearsal	CCHS
September 7, 2009	No School – Labor Day	
September 11, 2009	Football Game vs. Nova	CCHS
September ??, 2009	All-State Auditions	Seminole M.S.
September 19, 2009	Rosh Hashana	
September 24, 2009	Early Release	
September 26, 2009	Football Game – Away	Lockhart Stadium
September 28, 2009	No School – Yom Kippur	
October 2, 2009	Football Game vs. Western	CCHS
October 3, 2009	Falcon Sound Invitational	Flanagan H.S.
October 10, 2009	Football Game vs. Ft. Lauderdale	CCHS
October 10, 2009	Park Vista Competition	Park Vista H.S.
October 16, 2009	Football Game vs. McArthey	CCHS – Homecoming
October 17, 2009	Homecoming	
October 21 & 22	Early Release – Mid-terms	
October 22, 2009 (Thurs.)	Football Game vs. Coconut Creek	CCHS
October 23, 2009	No School – Teacher Planning	
October 23, 2009	Marching Band Rehearsal	CCHS
October 24, 2009	FBA Marching Festival	TBA
October 29, 2009 (Thurs.)	Football Game – Away	Coral Glades H.S.
October 30, 2009	Marching Band Rehearsal	CCHS
November 6, 2009	Football Game vs. Coral Springs	CCHS
November 7, 2009	Marching Chief’s Invitational	Santaluces H.S.
November 11, 2009	No School – Veteran’s Day	
November 13, 2009	Last Football Game vs. Flanagan	Flanagan H.S.
November 26 & 27, 2009	No School – Thanksgiving	
December 15, 2009	Winter Concert	CCHS

*Please visit the website on a regular basis for updated information pertaining to the many events that take place during the year. www.coopercityband.com

Parents & Volunteers

We Need Volunteers!

For this program to survive and be successful, it requires the participation of all band students, parents and boosters. Your participation is vital to the success of the entire band program, so please **GET INVOLVED!**

Volunteers are always needed to chair events, chaperone the students, help with equipment, assist with fundraisers, help with the Christmas tree stand, to work at the Bank Atlantic Center, or any of the hundreds of jobs that need to be done to get this program through the year. Not only will you be providing a valuable service, but you'll also have fun and meet other band parents and boosters who enjoy the band program as much as you do.

Please support the band by volunteering your time. Remember, no prior experience is needed for any task, just a willingness to help and some of your time. Do not wait to be asked. This is your formal invitation. **Please sign up! – see volunteer form in the end of this packet.**

Although we sometimes get caught up in all the fund raising activities, the most important function the parents perform is to show support for our band. We work hard but have a lot of fun at the same time.

**Have an idea for a new fundraiser? Want to volunteer to help with an existing fundraiser?
Call Art Nardin at (954) 205-0995.**

If you are interested in work at the Bank Atlantic Center, please contact Marc Weinberger at (305) 972-6966!

General Parent Meetings & Communications

Band parent meetings are held on the **second Tuesday of each month** at the high school (usually in the band room) at 7:30 P.M. The parent meetings provide the best opportunity to keep informed of upcoming events, to be involved in decision-making by letting your opinions be heard, and to ask questions. **Attendance at meetings is highly encouraged.** Special meetings may be called by the Band Director or President when deemed necessary. Parents will be notified of these meetings in advance. Also, the various committees hold meetings to prepare for individual events.

In addition to the monthly meetings, we have several other forms of communication. Weekly updates are blasted out, posted in the music hall, and posted on the website. Email blasts are sent out for updated information, change of schedules, itinerary information, or general needs of the program. Please be sure to read these emails thoroughly. Finally, we have our website that we are always updating. All students and parents should get in the habit of looking at the website for information.

Each band parent is automatically a member of CCHSBPA. Members can also be grandparents, alumni and former band parents. EVERYONE IS WELCOME.

Those of us who actively participate as band boosters do so because we believe in the importance of the program. Not only is it an excellent way to share some really great moments with our kids, but it is extremely rewarding as a parent. In order to see this program reach the heights it is capable of, a strong support system is needed. We must all work together in order to succeed.

Committees/Chairpersons

<u>Committee</u>	<u>Chairperson</u>	<u>Telephone</u>	<u>e-mail</u>
Uniforms			
Field Crew	Paul Hansen	954-849-1295	hansenherd@aol.com
Rehearsals/Waterings	Andrea Hansen	954-242-1308	Andrea_hansen@sheriff.org
Volunteers	Linda McHugh	954-252-8641	
Chaperones	Karen Pollock	954-397-8073	Karen.pollock@comcast.net
Band Camp	Sharon Leeds		Sharon17@bellsouth.net
State Trip	N/A	N/A	N/A
Concerts	N/A	N/A	N/A
Communication Relations	Eileen Kirsch	305-798-9727	
9th Grade Class Representatives	Christina Purvis Vicki Suarez	954-629-0011 954-232-1917	greeneyescc@hotmail.com vtorian@aol.com
10th Grade Class Representatives	Pam McGhee Tammy Arana	954-803-6832 954-274-9429	mark8902@bellsouth.net firemedctammy@msn.com
11th Grade Class Representatives	Allison Harley	305-546-7293	aharley@dadeschools.net
12th Grade Class Representatives	Nancy Ade Harriet Bleiweiss Gigi Morales Lori Roy	954-643-7056 954-701-6358 954-494-1370 954-691-6447	fandnade@aol.com crudite@bellsouth.net gigi@altria.com LSR4@aol.com
Website	Gary Leeds	954-415-2547	Leeds.gary@yahoo.com
Bank Atlantic Center	Marc Weinberger	305-972-6966	shipfood@aol.com
Concessions	Marc Weinberger	305-972-6966	shipfood@aol.com
Garage Sale			
Christmas Tree Stand	Martha Norato	954-599-5209	Martha_norato@sheriff.org
Auction			
Corporate Sponsors	Vito Scotello	954-670-4741	vscotello@gmail.com
Recycling	Gigi Morales	954-494-1370	gigi@altria.com
Scrip	Anne Marie Meyer		

All of the above committees need help with something if there is anything you are interested in, please don't hesitate to contact the appropriate people to volunteer and offer your services.

Additional parent information concerning committees, volunteering, and fundraising is on the website at www.coopercityhighband.com. Be sure to check the website out on a regular basis as new information is placed on the website and information is updated regularly.

All parents and students should keep this manual and read it carefully in its entirety from time to time to avoid any conflicts or misunderstanding of the information stated herein.

**PLEASE REVIEW THE FOLLOWING FORMS!
THEY NEED TO BE SIGNED
AND RETURNED TO THE BAND OFFICE**

DUE AT CAMP REGISTRATION ON Aug. 9, 2009

1. AUTHORIZATION FOR MEDICATION/TREATMENT
2. OVERNIGHT FIELD TRIP RULES OF CONDUCT
3. BAND & COLOR GUARD UNIFORM AND APPAREL ORDER FORM
4. STUDENT AND PARENT ACKNOWLEDGEMENT AGREEMENT

NOTE – Diabetic students will have to have further medical forms completed. If your child is diabetic, please contact to obtain such forms. Forms will also be available for download at www.coopercityhighband.com.

Other forms may be necessary throughout the year and parents will be notified accordingly.

CCHS Band Contact Info Sheet

Student Information

Student Name _____ Grade _____

Phone _____ Email Address _____

Check one () Marching Band: Instrument _____

() Color Guard

Parent Information

Parent's Name(s) _____

Primary Address _____

Phone Numbers: Please star * best contact number!

Home _____ (specify parent)

Cells: Mother _____ Father _____

Work: Mother _____ Father _____

Email Addresses:

Mother _____

Father _____

Occupation: Mother _____ Father _____

Employer: Mother _____ Father _____

Name of Sibling in Band _____ Grade _____

For CCHSBPA Use Only

- | | |
|--|-------------------------------|
| () Contact Information Form | () Uniform/Apparel/Gear Form |
| () Permission Form for Medical Treatment | () General Meal Order Form |
| () Authorization for Medication/Treatment | () Mary's BBQ Cookout Form |
| () Competition Subway Selection Form | () Spirit Buttons |

COLOR GUARD UNIFORM/APPAREL/GEAR FORM 2009-2010

Student Name: _____ Phone: _____

Grade: _____

MANDATORY ITEMS ALL GUARD MEMBERS

Show T-Shirt (No charge for students / \$10 Other Orders)

Qty _____ Small _____ X Large _____ Student Size: _____ **Extra Show Shirt Total: \$ _____**
 _____ Medium _____ XX Large

Red/Black Guard Shirt (\$20) Quantity: _____ Size: _____ **Shirt Total: \$ _____**

Black Split-Sole Jazz Sneakers (\$39.95) Quantity: _____ Size: _____ **Shoe Total: \$ _____**

Guard Duffle Bag (\$30) Quantity: _____ **Bag Total: \$ _____**

Rain Poncho (\$5) Quantity: _____ **Poncho Total: \$ _____**

Jazz Pants (\$20) Quantity: _____ Size: _____ **Pant Total: \$ _____**

Tan Gloves (\$13) Quantity: _____ Size: _____ **Glove Total: \$ _____**

Guard Track Jacket (\$45) Women's Size: _____ Men's Size: _____ **Jacket Total: \$ _____**

*If personalized: (\$53) and complete the following:

Name to appear on jacket: _____

Guard Track Pants (\$22 plain; \$27 with same logo as jacket) Pant Size _____ **Pant Total: \$ _____**

OPTIONAL ITEMS

Guard Flag Bag (\$20) *If personalized \$27 with name: _____ **Flag Bag Total: \$ _____**

Rifle (\$35) Quantity: _____ **Rifle Total: \$ _____**

Sabre (\$85) Quantity: _____ **Sabre Total: \$ _____**

Or

King Sabre (\$200 lifetime guarantee) Quantity: _____ **King Sabre Total: \$ _____**

JV Sabre (\$40) Quantity: _____ **JV Sabre Total: \$ _____**

*cannot be used in Fall Marching show

Red Color Guard Drawstring Tote Bag Quantity: _____ **Tote Bag Total: \$ _____**

TOTAL AMOUNT OF ORDER: \$ _____

MARCHING BAND UNIFORM/APPAREL/GEAR FORM 2009-2010

Student Name: _____ Phone: _____

Instrument/Section: _____ Grade: _____

MANDATORY ITEMS ALL BAND MEMBERS

NEW Red Polo Shirt (\$24 Students / \$30 Other Orders)

Qty _____	Ladies Small	_____	Adult Small	_____	Adult XL	Student Polo Total: \$ _____
	_____	Ladies Medium	_____	Adult Medium	_____	Adult XXL
	_____	Ladies Large	_____	Adult Large		Other Polo Total: \$ _____

Show T-Shirt (No charge for students / \$10 Other Orders)

Qty _____	Small	_____	X Large	Student Size: _____	Extra Show Shirt Total: \$ _____
	_____	Medium	_____	XX Large	

Black Band Gloves (\$2/pr) Brass and Woodwinds

Quantity: _____ **Glove Total: \$ _____**

Marching Shoes (\$35) Brass/WW/Perc.

Quantity: _____ Size: _____ **Shoe Total: \$ _____**

Band Duffle Bag (\$10) Brass/WW/Perc.

Quantity: _____ **Bag Total: \$ _____**

Rain Poncho (\$5) Brass/WW/Perc.

Quantity: _____ **Poncho Total: \$ _____**

OPTIONAL ITEMS

Band Track Jacket (\$45) Women's Size: _____ Men's Size: _____ **Jacket Total: \$ _____**

- If personalized: (\$53) and complete the following:

Name to appear on jacket: _____ Instrument: _____

Band Track Pants (\$22 plain; \$27 with same logo as jacket) Pant Size _____ **Pant Total: \$ _____**

TOTAL AMOUNT OF ORDER: \$ _____

THE SCHOOL BOARD OF BROWARD COUNTY, FLORIDA

Health Education Services, 600 SE 3 Avenue, 7th Floor, Ft. Lauderdale, FL 33301 Phone: (754) 321-2272

AUTHORIZATION FOR MEDICATION/TREATMENT

Student's Name: _____ **Date of Birth:** _____ **Grade:** _____

School: Cooper City High School **Phone #:** _____ **Fax #:** _____

Allergies: _____

Diagnosis: _____

MEDICATION	DOSAGE & ROUTE	FREQUENCY	SPECIFIC TIMES	SPECIAL INSTRUCTIONS/SIDE EFFECTS

TREATMENTS DURING SCHOOL HOURS

Treatment Plan: _____

PROCEDURE	TYPE	MEDS/FEEDING AMOUNT	FREQUENCY SPECIFIC TIMES	RATE/FLOW
Catheterization				
Feedings	↑ G-Tube ↑ J-Tube ↑ NG-Tube ↑ Special			
Suctioning	↑ Oropharynx			
	↑ Tracheostomy ↑ ↑ Deep Surface			
Tracheostomy	↑ Tube Replacement			
	↑ Care (Cleaning)			
CPT				
Oxygen				
Misting				
Nebulizer Tx				
Pulse Oximeter				

Are any of the above procedures required for emergency care? ↑ YES ↑ NO, IF "YES", specify: _____

List any procedures the student has been trained on and is competent to perform _____

List any limitations / precautionary measure that should be considered; e.g. physical education, outdoor activities, transporting, lifting, moving, special devices / equipment: _____

OVER →

AUTHORIZATION FOR MEDICATION / TREATMENT – PAGE 2

List any emergency precautions / health emergencies that should be anticipated for this student: e.g. allergy triggers, diabetic reactions, etc.): _____

There are no extraordinary emergency medial services available at school. Since only CPR and first aid are available until 911 arrive, is this adequate for student survival YES NO, if "NO", specify: _____

Physician's Name (Printed)

Physician's Signature

Physician's Telephone & Fax Nos.

Physician's Office Address

Date Completed

This information will be obtained by School District Personnel

PARENTAL PERMISSION FOR MEDICATION / TREATMENT
(TO BE COMPLETED BY THE STUDENT'S PARENT/GUARDIAN)

Student's Name: _____ Date of Birth: _____ Grade: _____
School: Cooper City High School Phone #: _____ Fax #: _____

I grant the principal or his / her designee the permission to assist or perform the administration of each medication or treatment / procedure to or for my child during the school day including when he/she is away from school property for official school events.

NOTE:

- Medications must be supplied in the original container. Ask the pharmacist to divide the medication into two completely labeled containers, providing one for home and one for school.
- Only medications/treatments authorized by a physician may be administered by school personnel.
- It is your responsibility to notify the school when there is a change in medication / treatment regimen.

Parent / Guardian Name (Printed)

Signature of Parent / Guardian

Date Signed

Home Phone Number

Work Phone Number (Include ext. if any)

Other numbers where you may be reached during school hours (Include cellular phone and beeper)

Student and Parent Acknowledgment and Agreement

By signing below, I acknowledge that I have read and understand all of the conditions for acceptance into the Cooper City High School Band Program listed above and agree to abide by all guidelines and procedures set forth by the Director of Bands.

Key points of the handbook:

WELCOME:	2
MEMBERSHIP	4
COOPER CITY HIGH SCHOOL BAND COURSE OFFERINGS	4
MARCHING BAND	7
REGULAR SEASON MARCHING BAND REHEARSALS	9
INDIVIDUAL MEMBERSHIP POLICIES, GUIDELINES, CORE FEES & PROGRAM FEES	10
GRADING POLICY	10
ATTENDANCE	11
EXCUSED ABSENCES	11
UNIFORMS	15
FEES AND COSTS:	16
CORE FEES.....	16
MARCHING BAND PROGRAM FEES.....	17
MULTIPLE CHILD FAMILIES:.....	17
STUDENT ACCOUNTS	18
ADDITIONAL INFORMATION	19
ANNUAL AWARDS BANQUET	19
DRUM CORPS	19
BAND LEADERS.....	20
BAND COUNCIL	20
LEADERSHIP MEETINGS.....	20
PARENTS & VOLUNTEERS	24
GENERAL PARENT MEETINGS & COMMUNICATIONS.....	24

We choose to be active members of **THE SOUND OF PRIDE FAMILY** for the 2009-2010 school year.

Student's signature _____ Date _____

Parent/Guardian's signature _____ Date _____